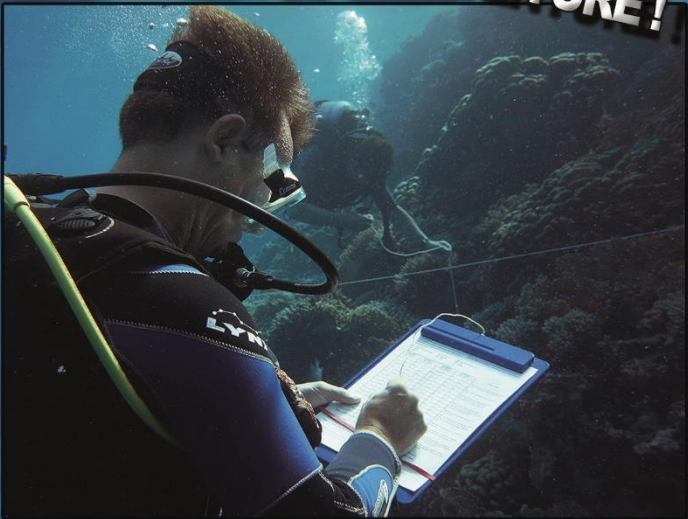




# THE ECO-DIVING ADVENTURE!



- ★ Explore the great variety of coral reefs
- ★ Perceive human impacts upon ecosystems
- ★ Take part in reef examinations
- ★ Collect scientific data
- ★ REEF CHECK - Saving reefs worldwide

Course Fee: 300 €

The 4-day Eco Diver Course includes:

- ★ Eco Diver Kit
- ★ 4 Lectures
- ★ 8 Dives
- ★ Test
- ★ Reef Check Survey
- ★ Practise of buoyancy, methodology and species identification skills
- ★ Eco Diver Certificate

**Requirements:**

It is required to have good buoyancy skills and a minimum of 30 logged dives.  
Language: English and german.

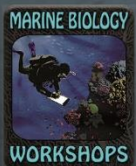
**About REEF CHECK:**

REEF CHECK is the world's largest international coral reef monitoring organization involving volunteer recreational divers and marine scientists. REEF CHECK began in 1996 in order to survey the world's coral reefs using one standardized method so that survey results could be compared wherever they were carried out. These data about the health of coral reefs are essential to face and reverse the decline of the world's coral reef ecosystems. The REEF CHECK protocol is focused on the abundance of particular coral reef organisms that best reflect the condition of the ecosystem and that are easy to recognize by the public. The techniques are simple to learn and the data are scientifically robust. REEF CHECK serves as the first step in attracting participation in coral reef management activities. For more information please visit: [www.reefcheck.org](http://www.reefcheck.org) & [www.reefcheck.de](http://www.reefcheck.de)

## Booking & Information:



**Red Sea Diving Safari**  
Cairo Head Office  
9 Degla St. (Off Shehab St.) Mohandseen, Giza – Egypt  
Tel.: +20-2-3337 1833 / 3337 9942  
Internet: [www.redsea-divingsafari.com](http://www.redsea-divingsafari.com)  
Email: [info@redsea-divingsafari.com](mailto:info@redsea-divingsafari.com)  
f Red Sea Diving Safari  
@ redsea.divingsafari

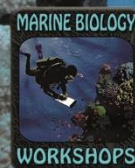
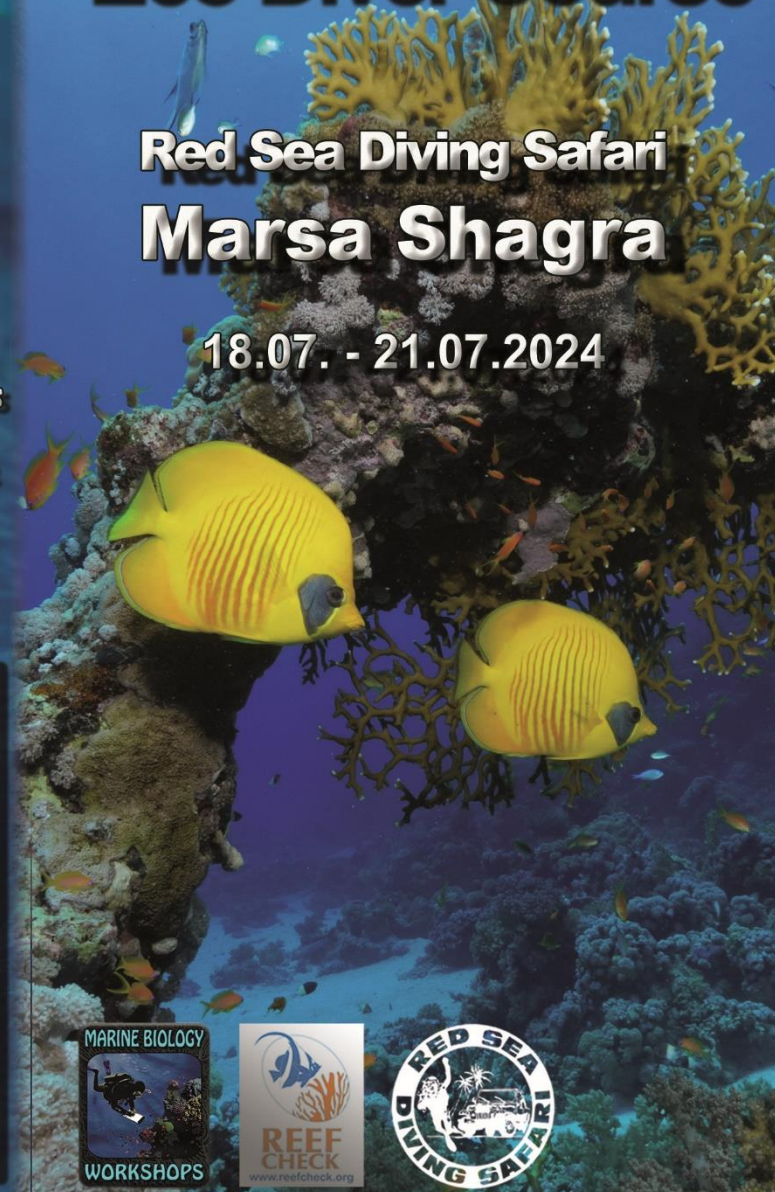


**Marine Biology Workshops**  
Course Leader: Dipl. biol. Stephan Moldzio  
Internet: [www.greencorals.de](http://www.greencorals.de)  
Email: [info@marinebiologyworkshops.de](mailto:info@marinebiologyworkshops.de)  
f Marine Biology Workshops  
@ green\_corals

# REEF CHECK Eco Diver Course

Red Sea Diving Safari  
Marsa Shagra

18.07. - 21.07.2024





# EcoDiver Course

# REEF CHECK Survey

# Indicator Organisms Fish

**REEF CHECK Survey Methods Summary**

**FISH AND INVERTEBRATE BELT TRANSECTS**

Count	25 m	50 m	75 m	100 m
Count	Count	Count	Count	Count
Percentage	Percentage	Percentage	Percentage	Percentage

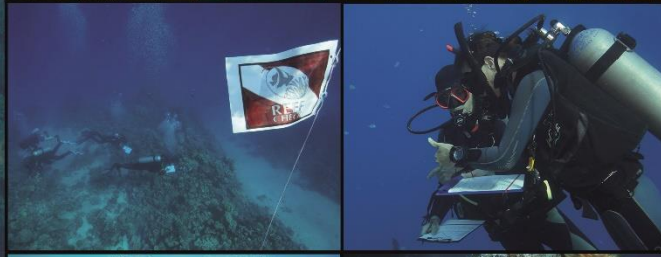
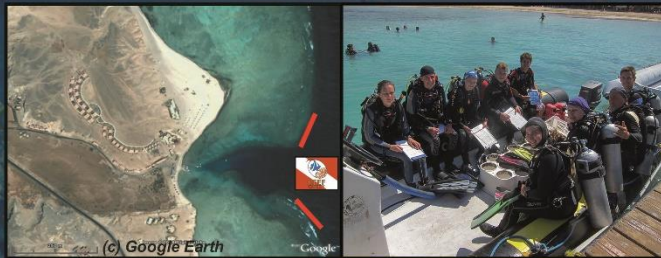
**SUBSTRATE LINE TRANSECTS**

Substrate types: HC Hard Coral, RNC Reef, RC Soft Coral, MA Macroalgae

**(c) Reef Check**



The course is conducted by marine biologist and REEF CHECK team scientist Stephan Moldzio. Upon successful completion of the course you will be certified as a REEF CHECK Eco Diver. The certification card qualifies you to participate in REEF CHECK surveys in the Indo-Pacific region and to submit data to the global database. You will learn a lot about fish, corals and invertebrates, coral reef ecology in general and about the threats to coral reefs today. Many participants have commented that their diving and their underwater perception has changed significantly since attending the course. Our first REEF CHECK course was conducted in February 2009 and our team has grown to 63 certified EcoDivers and 6 new Eco Diver Trainers (as of 8/2023). Participants came from all over the world: Egypt, Germany, Austria, Switzerland, England, France, Czech Republic, Denmark, Mexico, USA, Canada and Australia.



In 2009 REEF CHECK and RSDS have aligned themselves and we started a reefmonitoring program. Surveys at the most important dive sites of RSDS are conducted every year. RSDS as an official sponsor of REEF CHECK provides free diving during the course and the surveys. Red Sea Diving Safari is a long time pioneer in ecologically sustainable diving tourism in Egypt. Our team goal is to safeguard the healthy reefs in southern Egypt from damage caused by mass tourism and pollution. Check out our REEF CHECK reports at:

[www.redsea-divingsafari.com](http://www.redsea-divingsafari.com) & [www.reefcheck.de](http://www.reefcheck.de)

Photos & Layout © Stephan Moldzio



Off-Transect sightings



Invertebrates



Substrate

